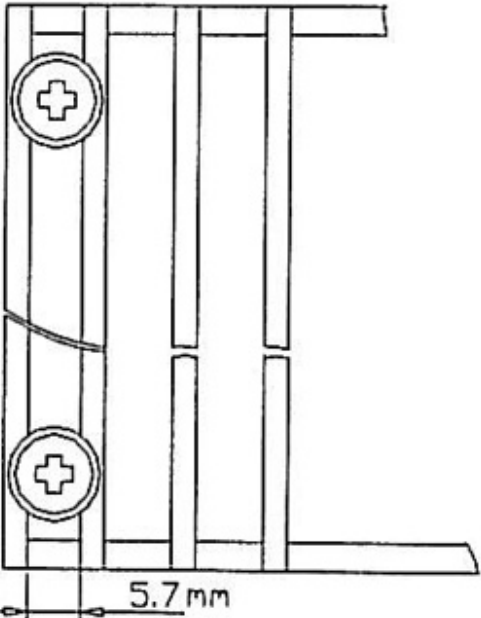
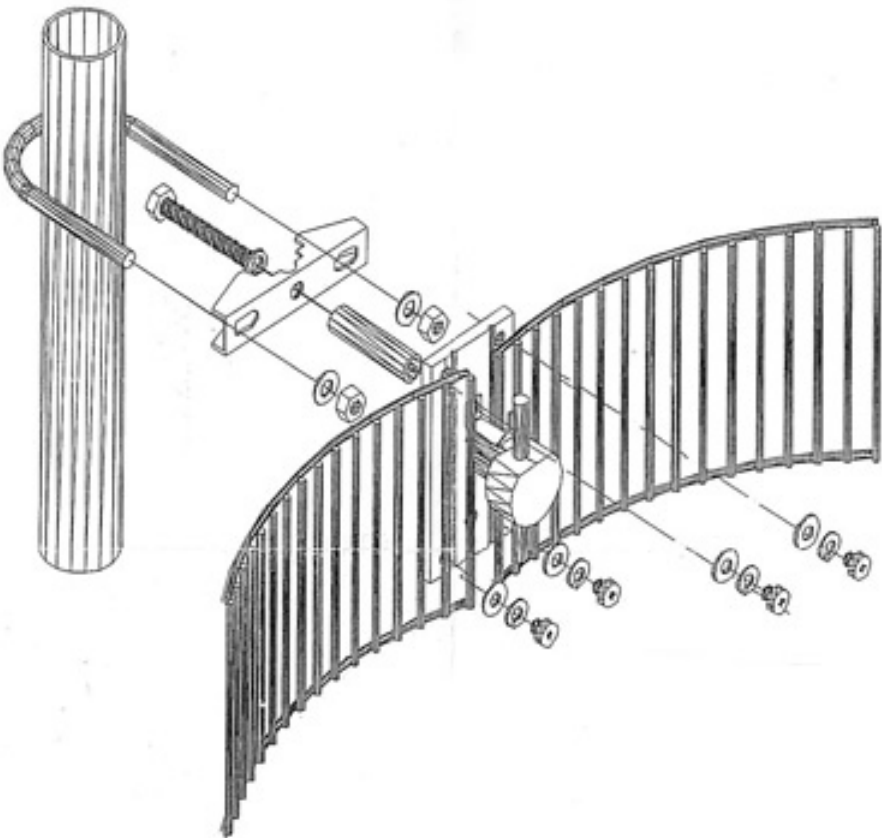
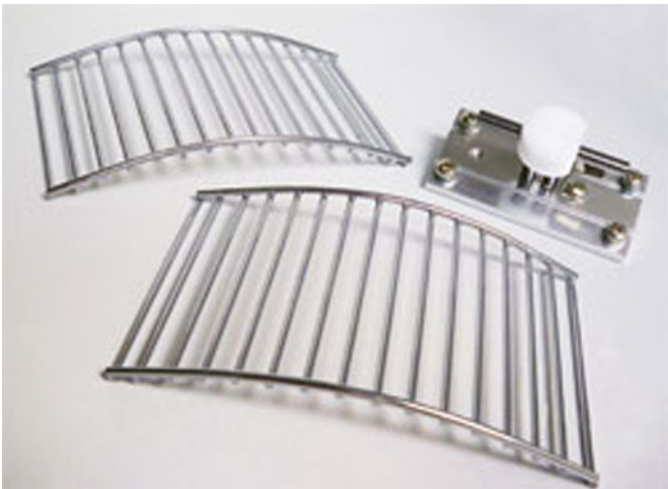


2.4 GHz RF HI-GAIN ANTENNA

Model # : GR-12



* NOTICE
Please screw a locked
plane on 5.7mm space
of adirectional antenna

SPECIFICATION

Frequency	2400 ~ 2500 MHz
Max Gain	12 dBi
Connector	N female
Beam width H	9.5 degree
Max Input Power	15W
Wave Impedance	50 OHMS \pm 5 Ω
Dimensions	275mm x 125mm x 90mm
Weught	270g
Use outdoors with outdoor housing	